



Rapportering med SharePoint 2010 og SQL Server 2008 R2

Carsten Fetterlein Hansen

carstenf@microsoft.com

*Formålet med denne session er at
give et indblik i mulighederne med
SQL Server 2008 R2 Report Builder
og SharePoint 2010*

20%

Today's BI Reality for Most Organizations

**Difficult
To Use**

“Foreign” tools inhibit adoption and use

Fragmented

Functionality split across multiple tools

Inflexible

Rigid and unable to change with the business

Departmental

Narrowly deployed without a complete view

Costly

Too costly for broad deployment

Empowering ALL Users

*JUST SOLVE
MY PROBLEM*

*BUILDING
THE DATA CENTER
OF THE FUTURE*

*REWIRING
THE ECONOMY*

*EFFORTLESSLY
CONNECTED
& IN CONTROL*

*SUPPORTING
BUSINESS
USERS*

IT PROFESSIONALS

*BUSINESS DECISION
MAKERS*

POWER USERS

DEVELOPERS

*INFORMATION
WORKERS*



Microsoft®
SQL Server®
PowerPivot for Excel.

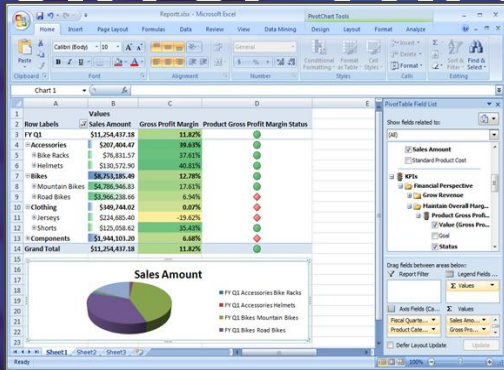
Microsoft BI Vision & Strategy

Improving organizations by providing business insights to *all* employees leading to better, faster, more relevant decisions

- Thinking Bigger About BI
- Complete & integrated Business Intelligence offering
- Empower decision makers across your extended organization

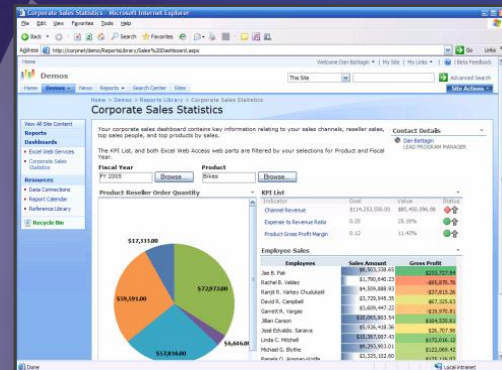


Deliver Through Office



Analyze data in Excel

Collaborate and share reports, analysis, and scorecards

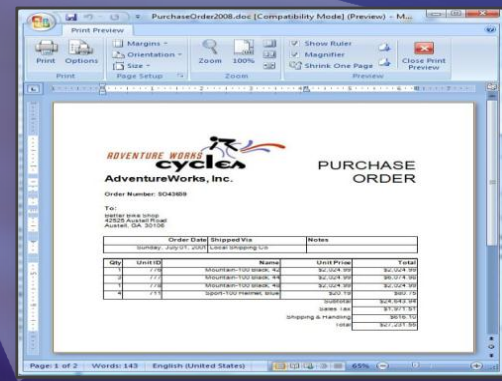


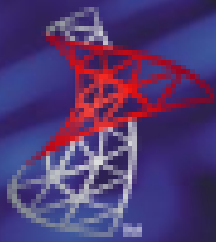
Publish reports and analysis to SharePoint

Render reports in Microsoft Office

The screenshot shows a SharePoint 'Sales Scorecard' report. It includes a table with columns for Actual, Target, Trend, and Person Responsible. The table is divided into sections for Sales Summary, Orders, and Financial Metrics.

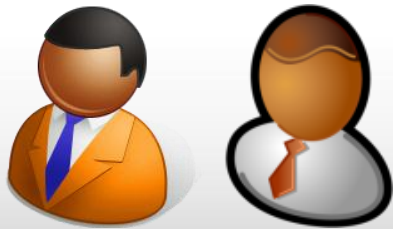
	Actual	Target	Trend	Person Responsible
Sales Summary				
Sales Overview				
Sales Amount	\$109,609,274			Jacob
Average Sales Amount	\$3,491			Jacob
Average Unit Price	\$465.18			Donna
Orders				
Order Quantity	274,276			Phil
Order Count	31,458			Phil
Financial Metrics				
Total Product Cost	\$97,257,908			Randy
Gross Profit Margin	11.43%			Catherine
Gross Profit	\$12,551,366			Catherine





Microsoft® SQL Server® 2008 R2

Empowering end users through “Managed Self-Service BI”



End User
Empowerment



IT Management &
Compliance

“Managed Self Service BI” delivered through:

- Self Service Analysis → Desktop Analytics
- **Self Service Reporting → End User Reporting**
- **SharePoint Integration → Sharing, Collaboration & Management**

Build

- Connect to data
- Integrate your data
- Develop visually



Manage

- Predictable response
- Simplified management
- Scale across mixed workloads



Deliver

- Deliver relevant information
- Drive actionable insights
- Share insights



DEVELOPERS



IT PROFESSIONALS



POWER USERS



INFORMATION WORKERS
BUSINESS DECISION MAKERS



rapporter

demo

Self Service Report Authoring

- Productive & Intuitive Authoring:
 - Report part publishing and reuse
 - Leverage hours of IT investment in Predefined reports.
All reports can now be componentized and shared with IW and other IT users.
- Collaboration:
 - “Grab & Go” reporting with a shared component library

Rapport komponenter



demo

Tablix Visualizations: Sparklines and Data Bars

- Sparklines
 - “Data intense, word-sized graphics” – *Tufte*
 - Automatic axis alignment. All charts can have the same data points, regardless of source data.
 - Can be converted into full charts to support additional small multiple scenarios.
- Data Bars
 - Usually depicts a single value in a cell.
 - Min and Max are automatically determined, but are configurable.

Team	W/L By Week (H= Dark)	TO Ratio	Pts/G vs Avg
Arizona Cardinals		0	26.7
Atlanta Falcons		-3	24.4
Baltimore Ravens		13	24.1
Buffalo Bills		-8	21.0
Carolina Panthers		6	25.9
Chicago Bears		5	23.4
Cincinnati Bengals		-2	12.8
Cleveland Browns		5	14.5
Dallas Cowboys		-11	22.6
Denver Broncos		-17	23.1
Detroit Lions		-9	16.8
Green Bay Packers		7	26.2
Houston Texans		-10	22.9
Indianapolis Colts		9	23.6
Jacksonville Jaguars		-7	18.9
Kansas City Chiefs		5	18.2
Miami Dolphins		17	21.6
Minnesota Vikings		-6	23.7
New Orleans Saints		-4	28.9
New England Patriots		1	25.6
New York Giants		9	26.7

Sparklines

Data Bars

Tablix Visualization: Indicators

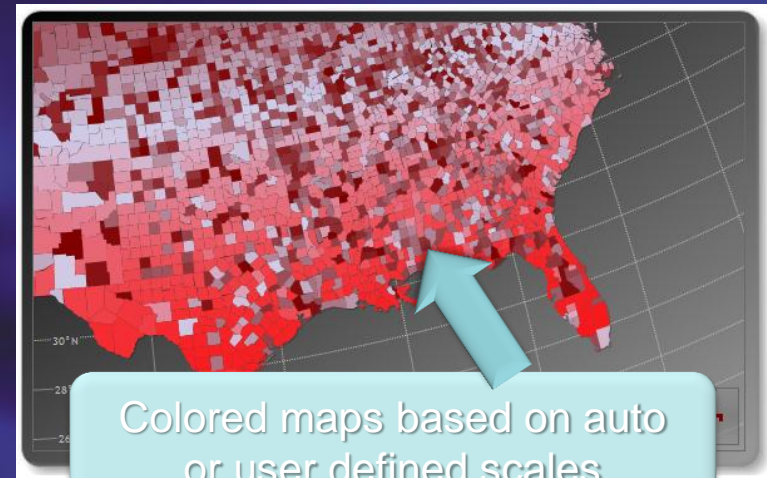
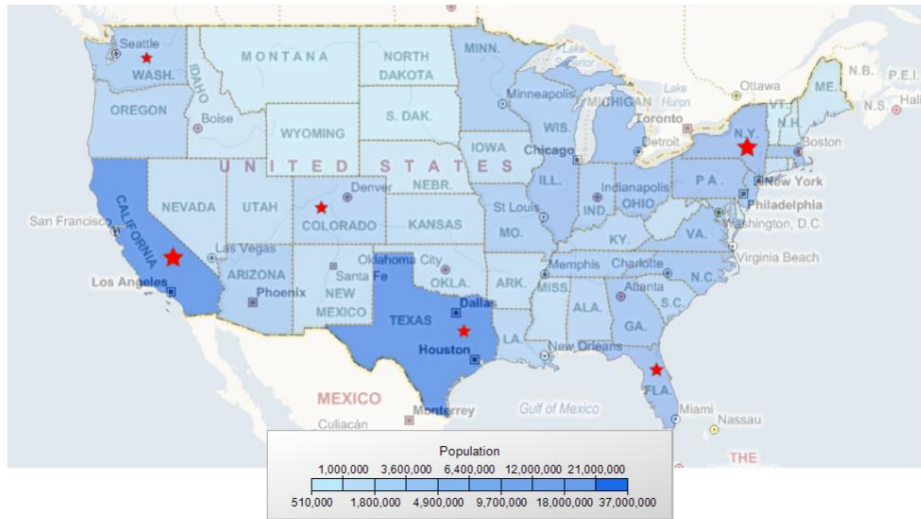
- Icons used to depict the status against a value, goals or a trend.
- Report authors can create their own sets or choose from several pre-configured sets.
- Colors, Icon and Size can be changed based on data.
- Automatic support for comparing each member of a group against siblings.
- Can also be placed inside gauges.

Team	W/L By Week (H= Dark)	TO Ratio	Pts/G vs Avg	3rd %	Pen Yds
Arizona Cardinals		0	26.7	42%	
Atlanta Falcons		-3	24.4	43%	
Baltimore Ravens		13	24.1	41%	
Buffalo Bills		-8	21.0	40%	
Carolina Panthers		6	25.9	40%	
Chicago Bears		5	23.4	36%	
Cincinnati Bengals		-2	12.8	35%	
Cleveland Browns		5	14.5	34%	
Dallas Cowboys		-11	22.6	43%	
Denver Broncos		-17	23.1	48%	
Detroit Lions		-9	16.8	29%	
Green Bay Packers		7	26.2	44%	
Houston Texans		-10	22.9	42%	
Indianapolis Colts		9	23.6	50%	
Jacksonville Jaguars		-7	18.9	41%	
Kansas City Chiefs		5	18.2	38%	
Miami Dolphins		17	21.6	37%	
Minnesota Vikings		-6	23.7	39%	
New Orleans Saints		-4	28.9	48%	
New England Patriots		1	25.6	43%	
New York Giants		9	26.7	43%	

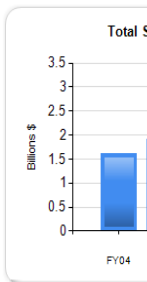
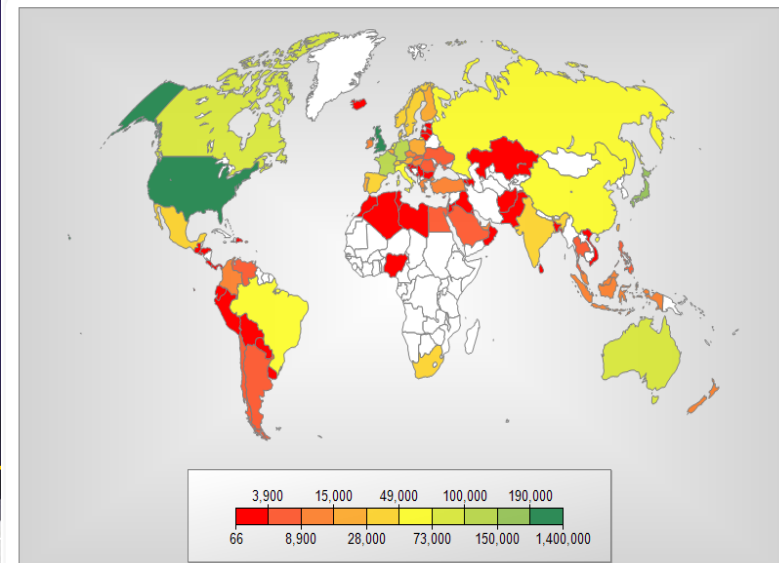
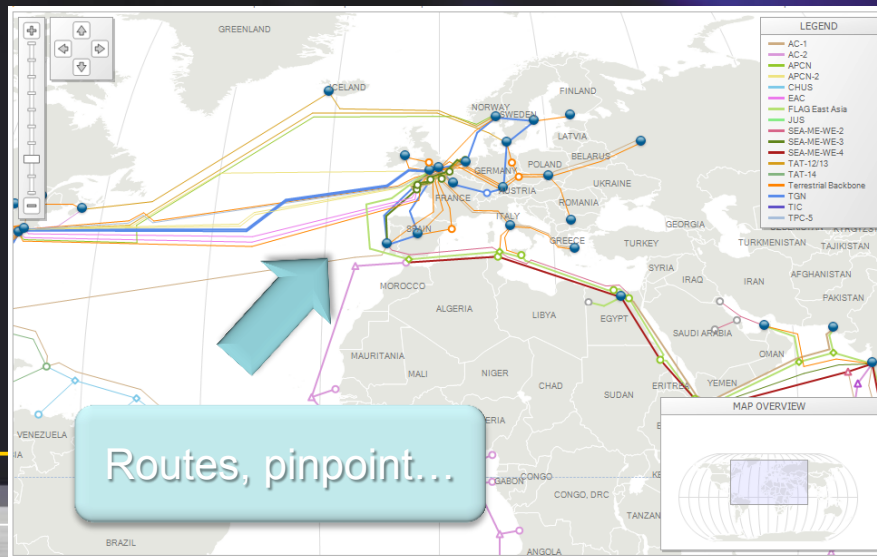
Map Features

- Support for SQL Spatial
- Integration with Virtual Earth tiles
- Data Grouping
 - Equal intervals, equal distribution, optimal, user-defined
- Multiple Map layers

Cool looking Data Visualization: and soon...



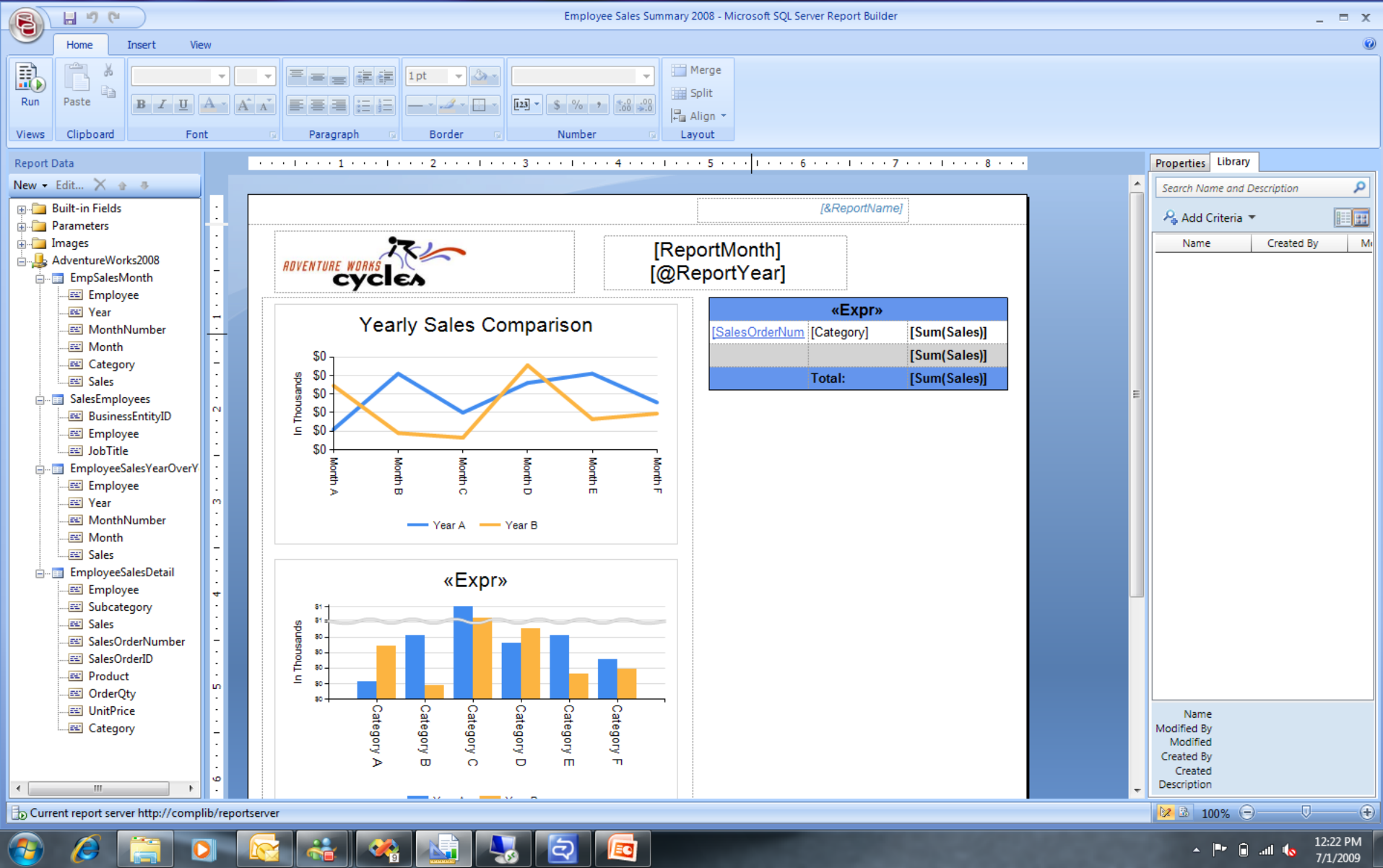
Worldwide Sales of FY08 (thousands \$)



Maps



demo



Employee Sales Summary 2008 - Microsoft SQL Server Report Builder

Home Insert View

Run Paste 1 pt Merge Split Align

Views Clipboard Font

Report Data

New Edit...

- Built-in Fields
- Parameters
- Images
- AdventureWorks2008
 - EmpSalesMonth
 - Employee
 - Year
 - MonthNumber
 - Month
 - Category
 - Sales
 - SalesEmployees
 - BusinessEntityID
 - Employee
 - JobTitle
 - EmployeeSalesYearOverY
 - Employee
 - Year
 - MonthNumber
 - Month
 - Sales
 - EmployeeSalesDetail
 - Employee
 - Subcategory
 - Sales
 - SalesOrderNumber
 - SalesOrderID
 - Product
 - OrderQty
 - UnitPrice
 - Category


Category A Category B Category C Category D Category E Category F

Current report server http://complib/reports/server

100%

12:22 PM 7/1/2009

Publish Report Components

 Publish report items as components

Publish items from this report and the items they depend on, such as datasets and parameters, to the current report server

- ➔ Publish all components with default settings
Click this option to publish your components with current settings. New components will use default name and folder location.
- ➔ Review and modify components before publishing
Click this option to select which components to publish and to edit properties before publishing.

Help Cancel

Properties Library

Search Name and Description

Add Criteria

Name	Created By	Mo
------	------------	----

Name
Modified By
Modified
Created By
Created
Description

Publish report components to library

Select report components to publish

Using the controls below to select and edit the report components to be published

Components

- ☐ Logo
- ☐ ReportYear
- ☐ ReportMonth
- ☐ EmployeeID
- ☐ Rectangle1
- ☐ Tablix3
- ☐ ShowDescription

Datasets

Report Data

New Edit...

- Built-in Fields
- Parameters
- Images
- AdventureWorks2008
 - EmpSalesMonth
 - Employee
 - Year
 - MonthNumber
 - Month
 - Category
 - Sales
 - SalesEmployees
 - BusinessEntityID
 - Employee
 - JobTitle
 - EmployeeSalesYearOverY
 - Employee
 - Year
 - MonthNumber
 - Month
 - Sales
 - EmployeeSalesDetail
 - Employee
 - Subcategory
 - Sales
 - SalesOrderNumber
 - SalesOrderID
 - Product
 - OrderQty
 - UnitPrice
 - Category

Properties Library

Search Name and Description

Add Criteria

Name	Created By	Modified By

Name
Modified By
Modified
Created By
Created
Description

Current report server http://complib/reportserver

100%

12:22 PM
7/1/2009

Publish report components to library

Select report components to publish

Using the controls below to select and edit the report components to be published

Components

- ☐ Logo
- ☐ ReportYear
- ☐ ReportMonth
- ☐ EmployeeID
- ☐ Rectangle1
- ☐ Tablix3
- ☐ ShowDescription

Datasets

- ☐ EmployeeSalesDetail
- ☐ EmpSalesMonth
- ☐ EmployeeSalesYearOverYear

Report Data

New Edit...

- Built-in Fields
- Parameters
- Images
- AdventureWorks2008
 - EmpSalesMonth
 - Employee
 - Year
 - MonthNumber
 - Month
 - Category
 - Sales
 - SalesEmployees
 - BusinessEntityID
 - Employee
 - JobTitle
 - EmployeeSalesYearOverY
 - Employee
 - Year
 - MonthNumber
 - Month
 - Sales
 - EmployeeSalesDetail
 - Employee
 - Subcategory
 - Sales
 - SalesOrderNumber
 - SalesOrderID
 - Product
 - OrderQty
 - UnitPrice
 - Category

Properties Library

Search Name and Description

Add Criteria

Name	Created By	Modified
------	------------	----------

Name
Modified By
Modified
Created By
Created
Description

Current report server http://complib/reportserver

100%

12:22 PM
7/1/2009

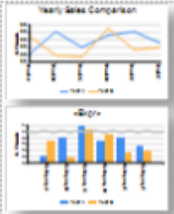
Publish report components to library

Select report components to publish

Using the controls below to select and edit the report components to be published

Components

- ☐ Logo
- ☐ ReportYear
- ☐ ReportMonth
- ☐ EmployeeID
- ☐ Rectangle1



A description of the component which can be edited here or in the properties dialog for the report item

Report server folder: /

Last modified: 7/1/2009 12:22:58 PM REDMOND\rogersa

First published: 7/1/2009 12:22:58 PM REDMOND\rogersa

☐ Publish as a new component

Datasets

- ☐ Tablix3
- ☐ ShowDescription

Report Data

New Edit...

- Built-in Fields
- Parameters
- Images
- AdventureWorks2008
 - EmpSalesMonth
 - Employee
 - Year
 - MonthNumber
 - Month
 - Category
 - Sales
 - SalesEmployees
 - BusinessEntityID
 - Employee
 - JobTitle
 - EmployeeSalesYearOverY
 - Employee
 - Year
 - MonthNumber
 - Month
 - Sales
 - EmployeeSalesDetail
 - Employee
 - Subcategory
 - Sales
 - SalesOrderNumber
 - SalesOrderID
 - Product
 - OrderQty
 - UnitPrice
 - Category

Properties Library

Search Name and Description

Add Criteria

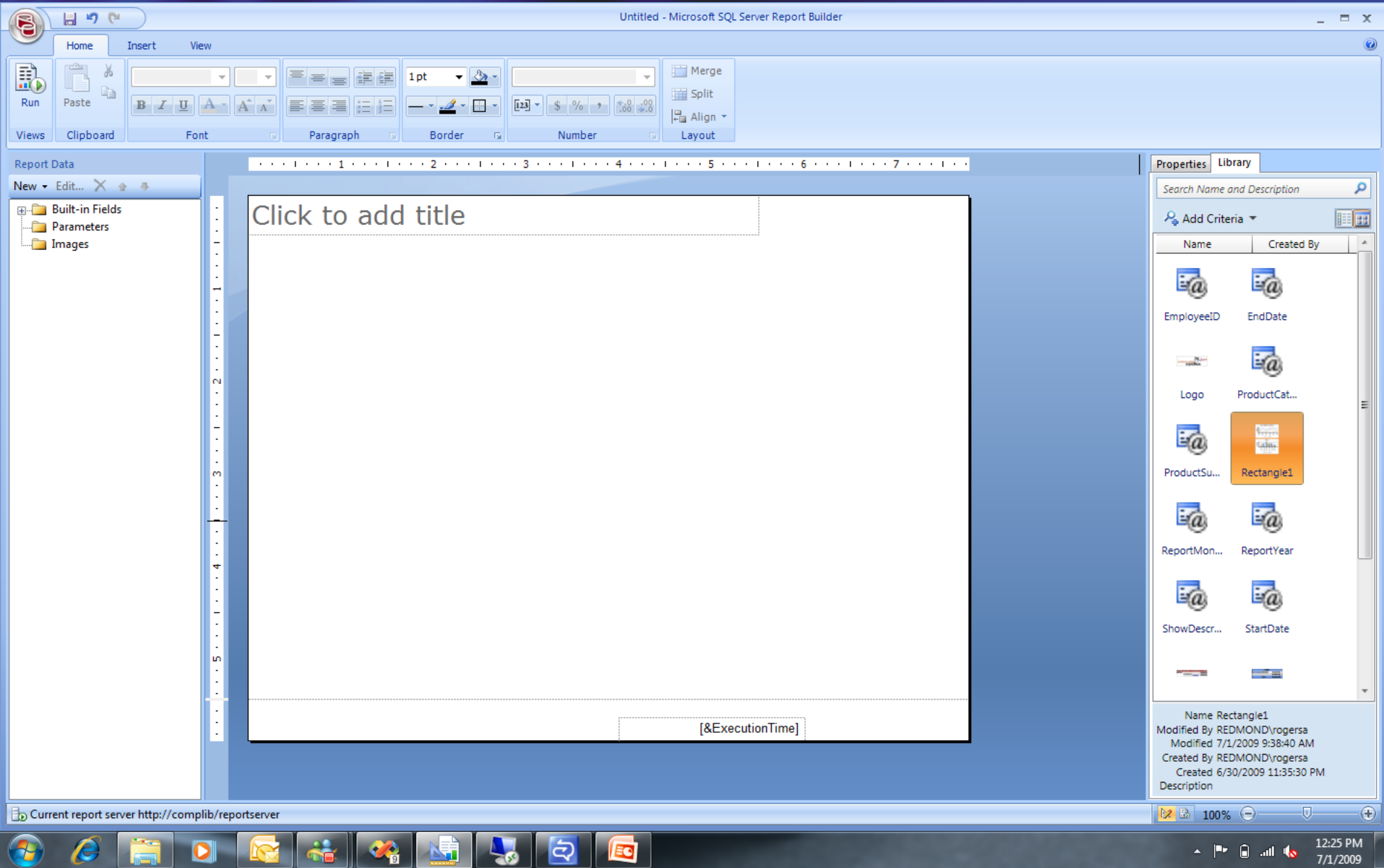
Name	Created By	Modified

Name
Modified By
Modified
Created By
Created
Description

Current report server http://complib/reportserver

100%

12:22 PM
7/1/2009



Microsoft SQL Server Report Builder interface showing a report titled "Yearly Sales Comparison". The report displays two charts: a line chart for "Yearly Sales Comparison" and a bar chart for "«Expr»". The line chart compares sales for Year A (blue) and Year B (orange) across six months (Month A to Month F). The bar chart compares sales for Year A (blue) and Year B (orange) across six categories (Category A to Category F). The Y-axis for both charts is labeled "In Thousands".

Yearly Sales Comparison (Line Chart Data):

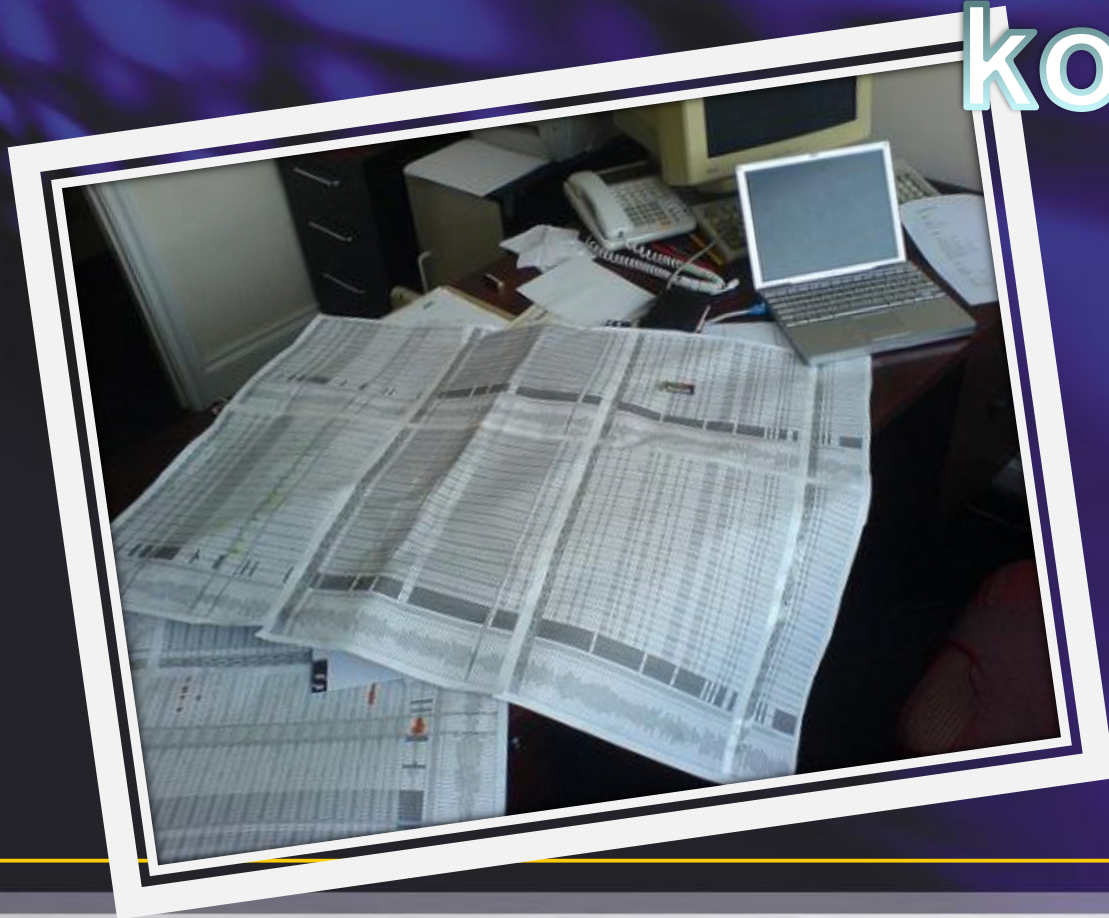
Month	Year A (In Thousands)	Year B (In Thousands)
Month A	10	10
Month B	20	10
Month C	10	10
Month D	20	20
Month E	20	10
Month F	10	10

«Expr» (Bar Chart Data):

Category	Year A (In Thousands)	Year B (In Thousands)
Category A	10	10
Category B	10	10
Category C	10	10
Category D	10	10
Category E	10	10
Category F	10	10

The interface includes a "Report Data" pane on the left showing a tree view of data sources (AdventureWorks2008, EmployeeSalesYearOverY, Employee, Year, MonthNumber, Month, Sales, EmpSalesMonth, Employee, Year, MonthNumber, Month, Category, Sales). The "Properties" pane on the right shows the "Name" and "Created By" for the selected object (Rectangle1). The status bar at the bottom indicates the current report server URL: http://complib/reportserver.

Deling af komponenter



demo

Reporting Services as a Data Source



Self Service Analytics to Self Service Reporting and back...

- Reports as the primary data source for information worker analysis
 - SSRS reports become Data Feeds
- Native support for KPIs
- Build SSRS report on top of Information Worker analysis models

Reporting Services - Territory Sales Drilldown - Windows Internet Explorer

http://bi-vpc/Reports/_layouts/ReportServer/RSViewerPage.aspx?RelativeReportUrl=/reports/report

Reporting Services - Territory Sales Drilldown

AdventureWorks > Reports > ReportsLibrary

My Site | My Links

Actions | 1 of 1 | 100%

Open with Report Builder
Print
Export

- XML file with report data
- CSV (comma delimited)
- TIFF file
- Acrobat (PDF) file
- Web archive
- Excel
- data feed**

Territory Sales

Territory	Sales Person	Member	Total Sales
<input checked="" type="checkbox"/> Australia			\$1,943,016.45
<input checked="" type="checkbox"/> Canada			\$12,808,458.05
<input checked="" type="checkbox"/> Central			\$13,434,509.55
<input checked="" type="checkbox"/> France			\$6,083,690.96
<input checked="" type="checkbox"/> Germany			\$2,476,530.47
	<input checked="" type="checkbox"/> Rachel Valdez		\$2,476,530.47
		SO51109	\$101,012.38
		SO51125	\$1,375.16
		SO51169	\$98,414.98
		SO51171	\$4,547.17
		SO51172	\$3,261.42
		SO51166	\$98.34
		SO51155	\$44,877.77
		SO51161	\$8,506.34
		SO51098	\$1,782.92
		SO51697	\$486.39
		SO51690	\$4,161.13
		SO51695	\$275.74
		SO51753	\$6,041.42

Done

Local intranet 100%

Untitled - Gemini Client Window

HomeGemini

Connection String

Connection

From Database

New Table

From Data Feed

New Table

Other

Refresh

Insert Row/Column

Table Tools

Add Relationship

Table Tools

Properties

Add Total

Columns Tools

Insert Row Column

Columns Tools

Rules

Columns Tools

Tables

View

Relationships

View

PivotTable

View

Table Import Tool

Data Preview Page

Preview the data you have selected.

	Territory	Sales Person	Order Number	Total Sales
▶	Germany	Rachel Valdez	SO43720	3578.2700
	Germany	Rachel Valdez	SO43985	3578.2700
	Germany	Rachel Valdez	SO44053	699.0982
	Germany	Rachel Valdez	SO44056	3578.2700
	Germany	Rachel Valdez	SO44158	3578.2700
	Germany	Rachel Valdez	SO44192	3578.2700
	Germany	Rachel Valdez	SO44216	3578.2700
	Germany	Rachel Valdez	SO44361	3578.2700
	Germany	Rachel Valdez	SO44393	3399.9900
	Germany	Rachel Valdez	SO44402	3578.2700
	Germany	Rachel Valdez	SO44421	3578.2700
	Germany	Rachel Valdez	SO44472	3578.2700
	Germany	Rachel Valdez	SO44590	3578.2700
	Germany	Rachel Valdez	SO44619	3578.2700
	Germany	Rachel Valdez	SO44622	3578.2700
	Germany	Rachel Valdez	SO44646	3399.9900
	Germany	Rachel Valdez	SO44808	3578.2700
	Germany	Rachel Valdez	SO44837	3578.2700
	Germany	Rachel Valdez	SO44917	3578.2700
	Germany	Rachel Valdez	SO44918	3378.9900

< Back

Next >

Finish

Cancel

Untitled - Gemini Client Window				
Home Gemini				
Connection String	From Database	From Data Feed	Other	Refresh
Connection	New Table		Table Tools	
			Add Total	Insert Row/Column
			Rules	Tables
				Relationships
				PivotTable
			Columns Tools	
			View	
territory	salesperson	ordernumber	totalsales	Add Column
Germany	Rachel Valdez	S047339	2181.5625	
Germany	Rachel Valdez	S073898	56.97	
Germany	Rachel Valdez	S071592	38.98	
Germany	Rachel Valdez	S071467	776.33	
Germany	Rachel Valdez	S045002	3578.27	
Germany	Rachel Valdez	S047232	2181.5625	
Germany	Rachel Valdez	S070742	1120.49	
Germany	Rachel Valdez	S070744	1198.97	
Germany	Rachel Valdez	S044917	3578.27	
Germany	Rachel Valdez	S073022	1155.48	
Germany	Rachel Valdez	S074461	6.28	
Germany	Rachel Valdez	S071455	30.48	
Germany	Rachel Valdez	S072594	2390.95	
Germany	Rachel Valdez	S044905	3578.27	
Germany	Rachel Valdez	S073807	2344.96	
Germany	Rachel Valdez	S070761	2322.28	
Germany	Rachel Valdez	S074997	29.48	
Germany	Rachel Valdez	S044838	3578.27	
Germany	Rachel Valdez	S071629	814.47	
Germany	Rachel Valdez	S073760	811.32	
Germany	Rachel Valdez	S046921	2181.5625	
Germany	Rachel Valdez	S073455	32.27	
Germany	Rachel Valdez	S072394	49.99	
Germany	Rachel Valdez	S046876	2181.5625	
Germany	Rachel Valdez	S071452	38.98	
Germany	Rachel Valdez	S046865	2181.5625	
Germany	Rachel Valdez	S073978	63.97	
Germany	Rachel Valdez	S044622	3578.27	
Germany	Rachel Valdez	S074243	6.28	
Germany	Rachel Valdez	S074144	2419.06	
Germany	Rachel Valdez	S044611	3578.27	
Germany	Rachel Valdez	S050997	2443.35	
Germany	Rachel Valdez	S044580	3578.27	
Germany	Rachel Valdez	S046731	2181.5625	
Germany	Rachel Valdez	S070793	7.28	
Germany	Rachel Valdez	S071310	38.98	
Germany	Rachel Valdez	S046701	2181.5625	
Germany	Rachel Valdez	S044426	3578.27	
Germany	Rachel Valdez	S044421	3578.27	
Germany	Rachel Valdez	S067157	2443.35	
Germany	Rachel Valdez	S071589	75.97	
Germany	Rachel Valdez	S046677	2181.5625	
Germany	Rachel Valdez	S044402	3578.27	
Germany	Rachel Valdez	S044361	3578.27	
Germany	Rachel Valdez	S073549	25.48	
Germany	Rachel Valdez	S044258	3578.27	
Germany	Rachel Valdez	S050806	2443.35	
Germany	Rachel Valdez	S044216	3578.27	
Germany	Rachel Valdez	S070161	539.99	

territorysales



Rapport kilder demo

Summary - Managed Self-Service BI

Empowering end users through “Managed Self-Service BI”



“Managed Self Service BI” delivered through:

- Self Service Analysis → Desktop Analytics
- **Self Service Reporting → End User Reporting**
- **SharePoint Integration → Sharing, Collaboration & Management**



Microsoft[®]

Your potential. Our passion.[™]

© 2008 Microsoft Corporation. All rights reserved. Microsoft, Windows, Windows Vista and other product names are or may be registered trademarks and/or trademarks in the U.S. and/or other countries. The information herein is for informational purposes only and represents the current view of Microsoft Corporation as of the date of this presentation. Because Microsoft must respond to changing market conditions, it should not be interpreted to be a commitment on the part of Microsoft, and Microsoft cannot guarantee the accuracy of any information provided after the date of this presentation.

MICROSOFT MAKES NO WARRANTIES, EXPRESS, IMPLIED OR STATUTORY, AS TO THE INFORMATION IN THIS PRESENTATION.